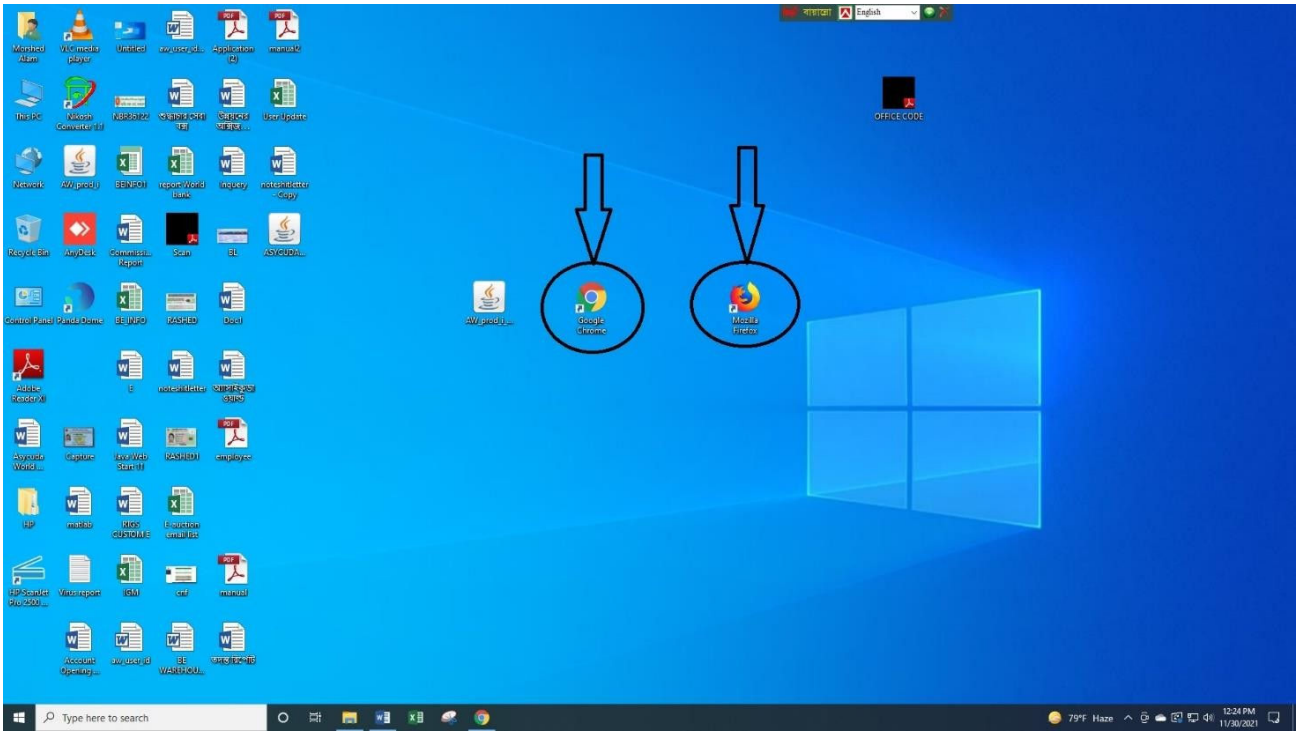


# Asycuda World System

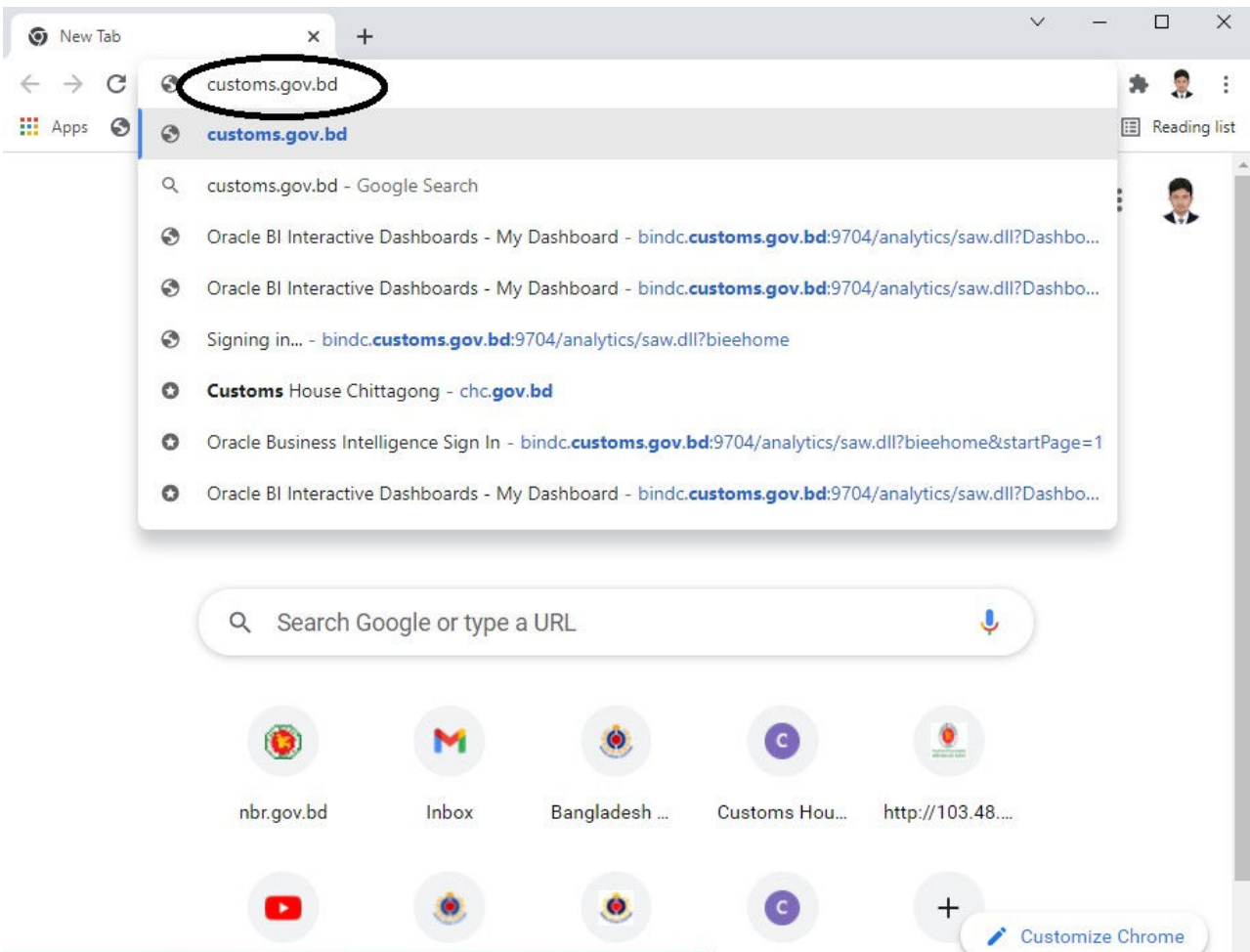
## OTP(One Time Password) Based Login Manual

### **Login procedure of Asycuda Wold System using Username Password & OTP:**

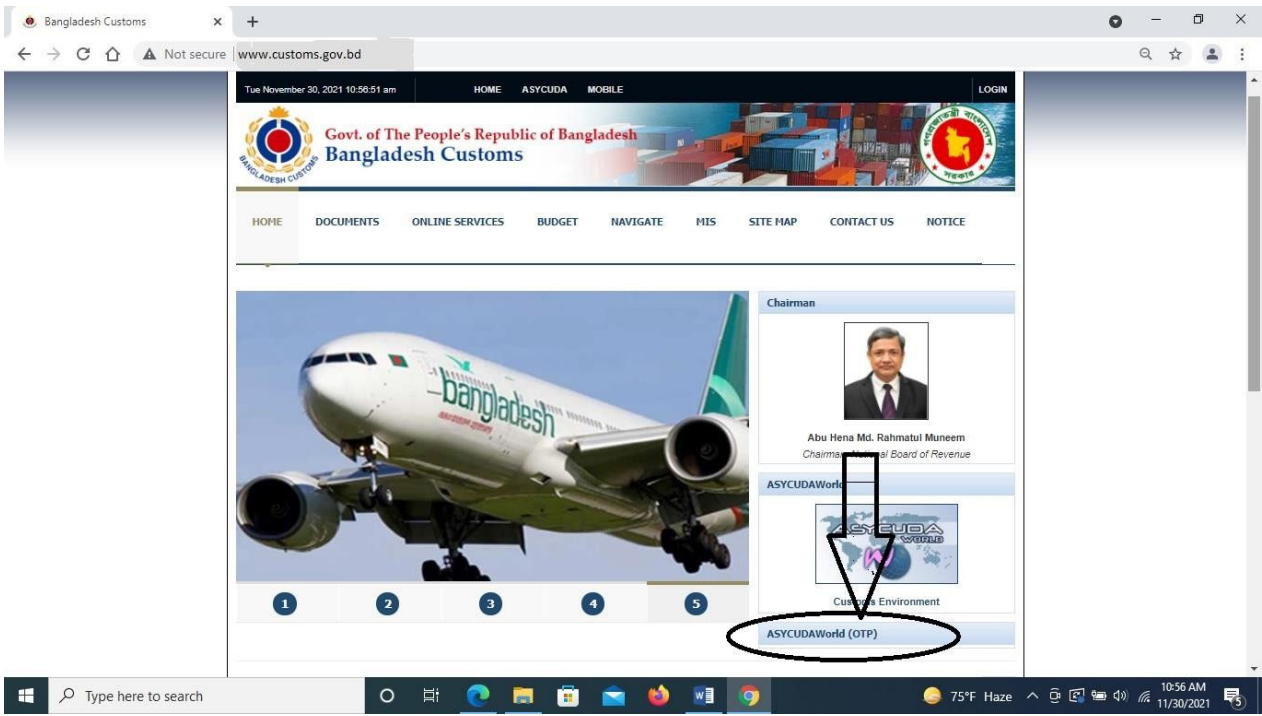
1. Goto the Desktop & click on any browser(Figure-1).
2. Now click on the browser search bar & type the address: [customs.gov.bd](https://customs.gov.bd) (Figure-2).
3. Now click on the “ASYCUDAWorld(OTP)” (Figure-3).
4. Now you will get notifications to keep(save) the file of “ASYCUDAWorld(OTP)” & click on the keep(Figure-4).
5. Now click on the right button of mouse to show the location of downloaded ASYCUDAWorld(OTP) & click on “show in folder” (Figure-5).
6. Now you will get the “AW\_prod\_OTP ” file & click on the right button of the mouse to copy (Figure-6).
7. Goto Desktop & click on the right button of the mouse to paste the copied file(Figure-7).
8. Now double click on the “AW\_prod\_OTP” (Figure-8)
9. Now click on the “I accept the risk and want to run this application” (Figure-9).
10. Now click on the Login name(username), password and provide personal credentials and enter on the keyboard.(Figure-10).
11. Now you will get an OTP from BD Customs into the mobile number & email address (Figure-11).
12. Now enter the OTP into the “AW\_prod\_OTP ” file & press enter on the keyboard(Figure-12).
13. After entering the OTP into the “AW\_prod\_OTP” , you will finally be able to login into the ASYCUDA WORLD SYSTEM(Figure-12)



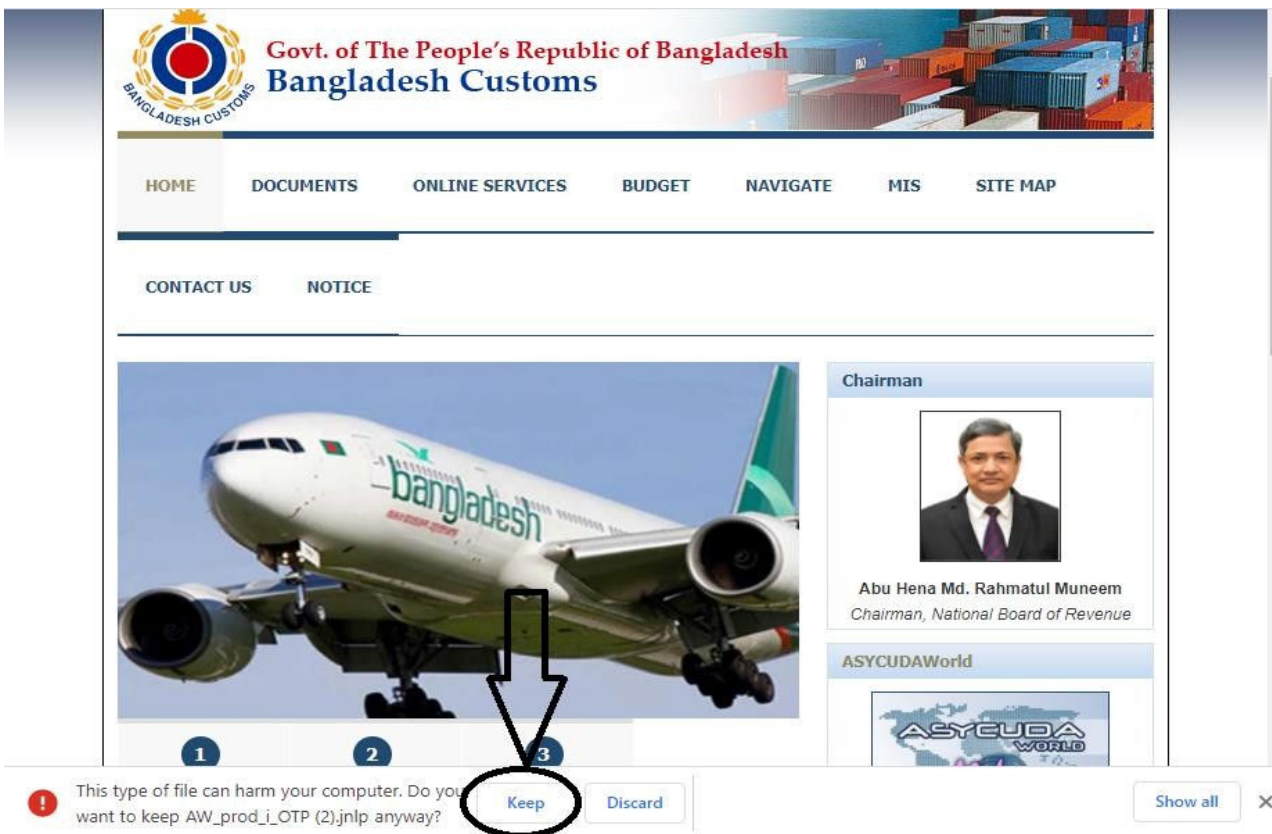
(Figure-1)



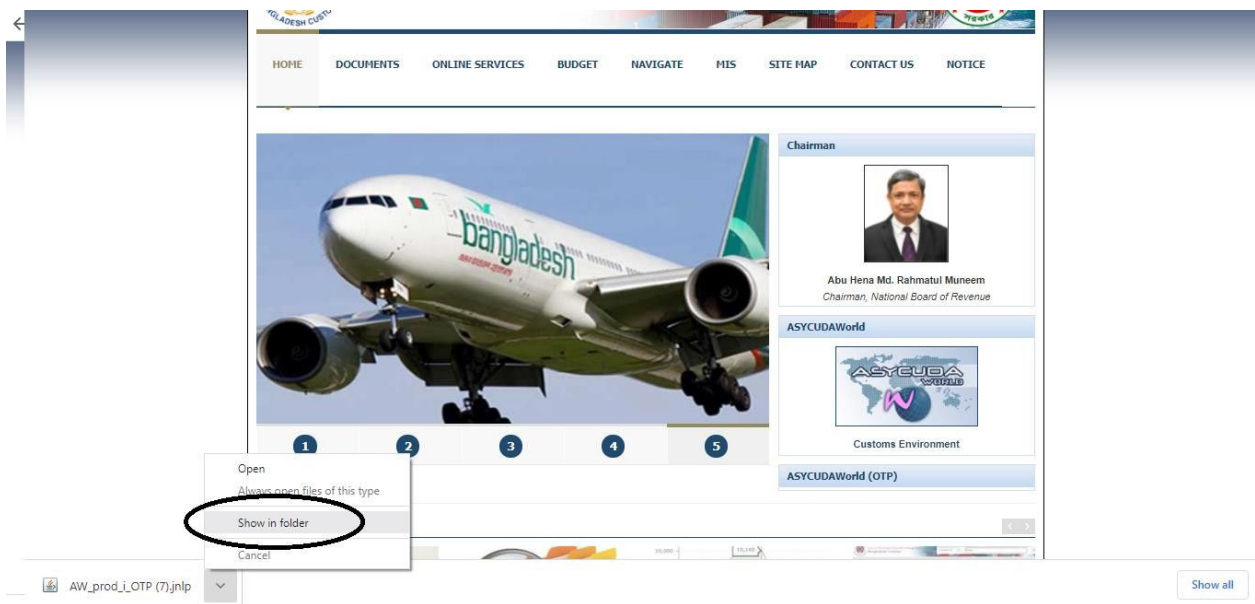
(Figure-2)



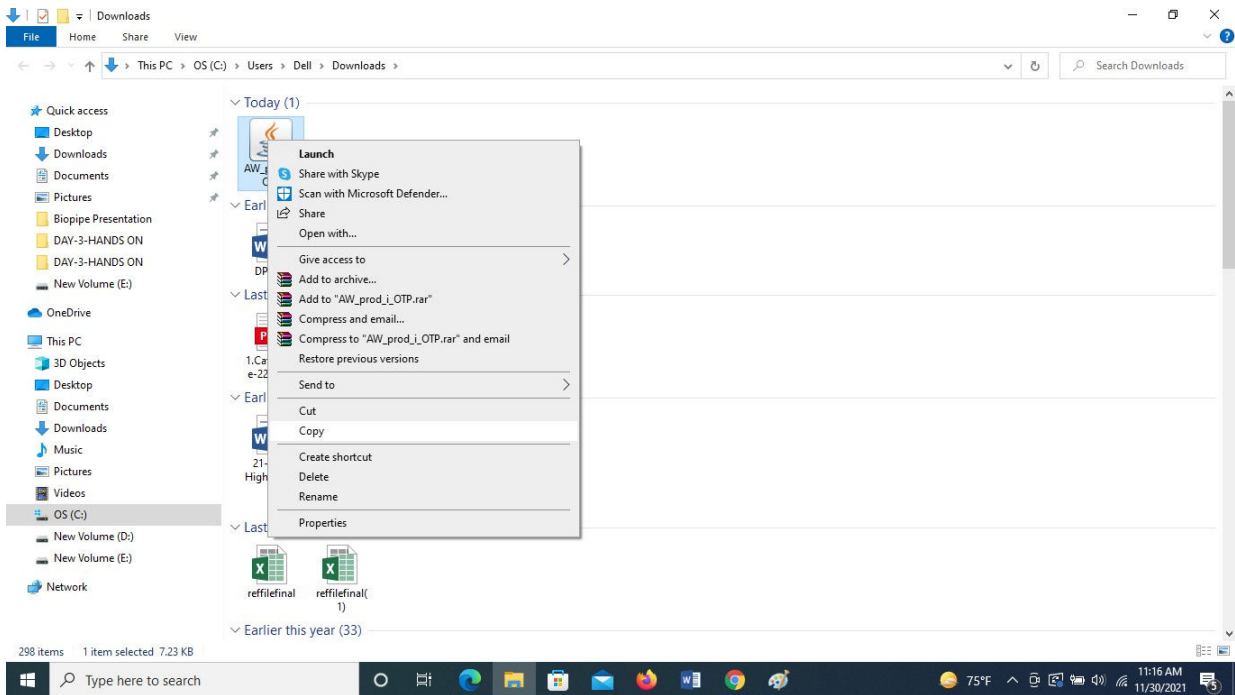
(Figure-3)



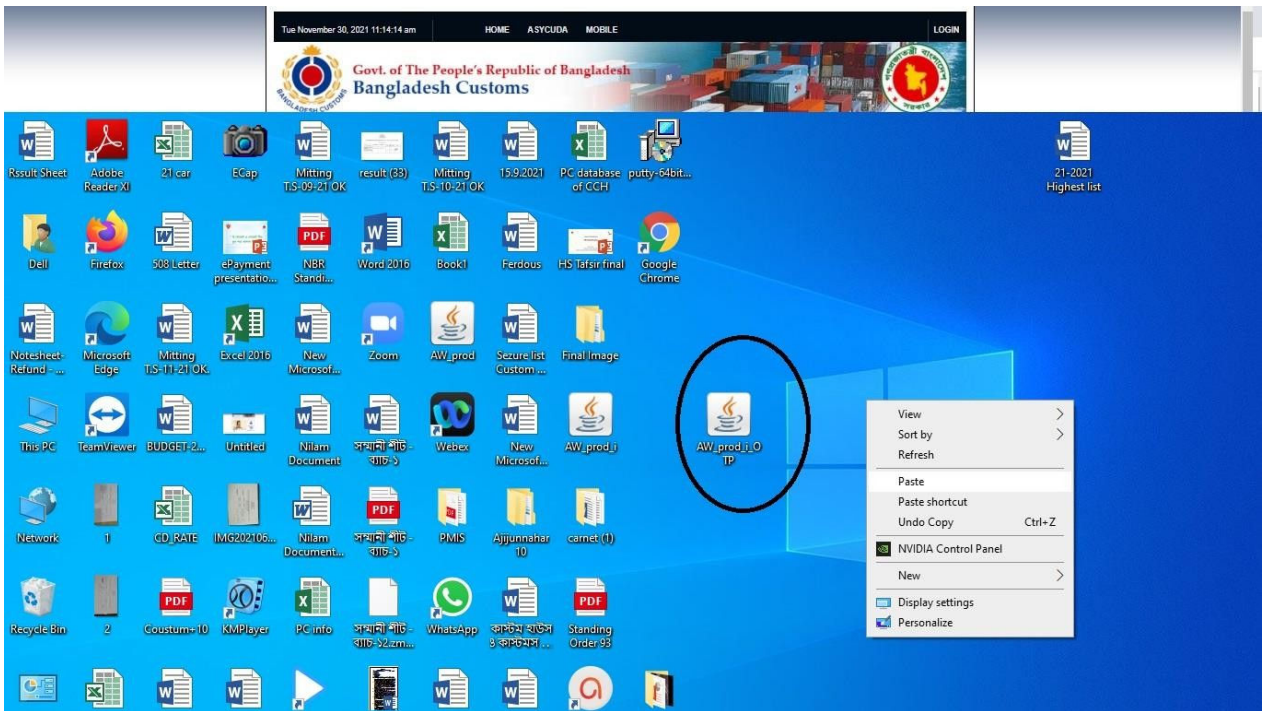
(Figure-4)



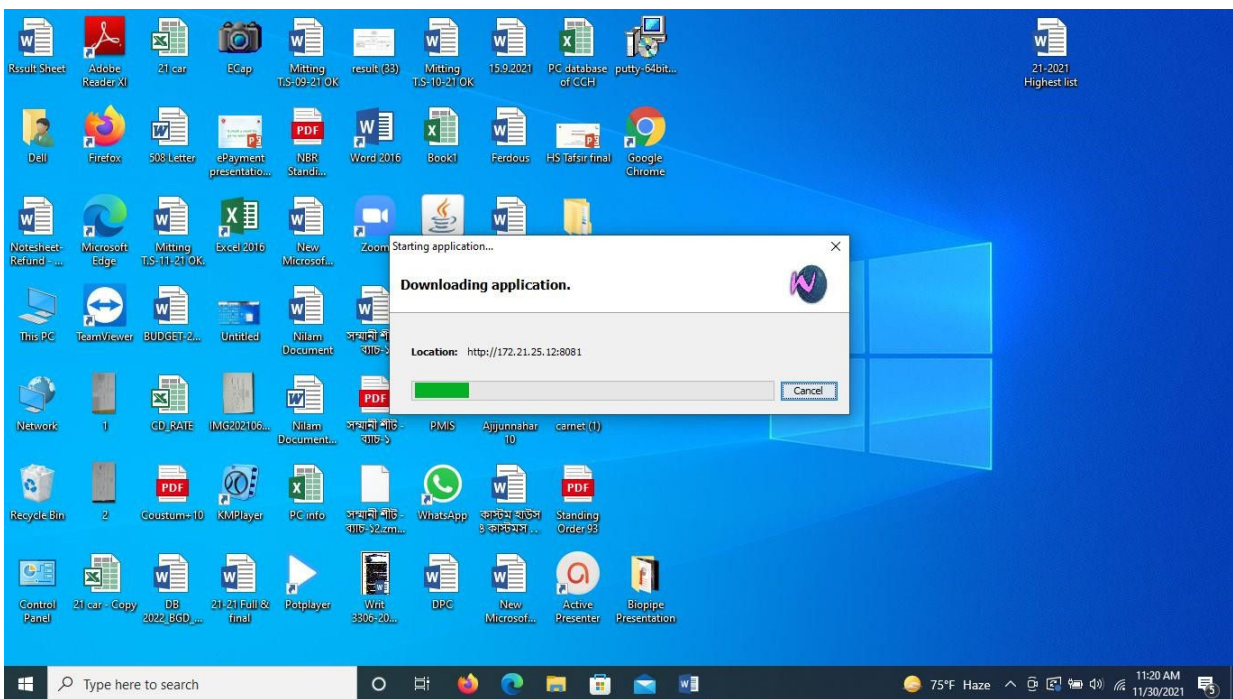
(Figure-5)



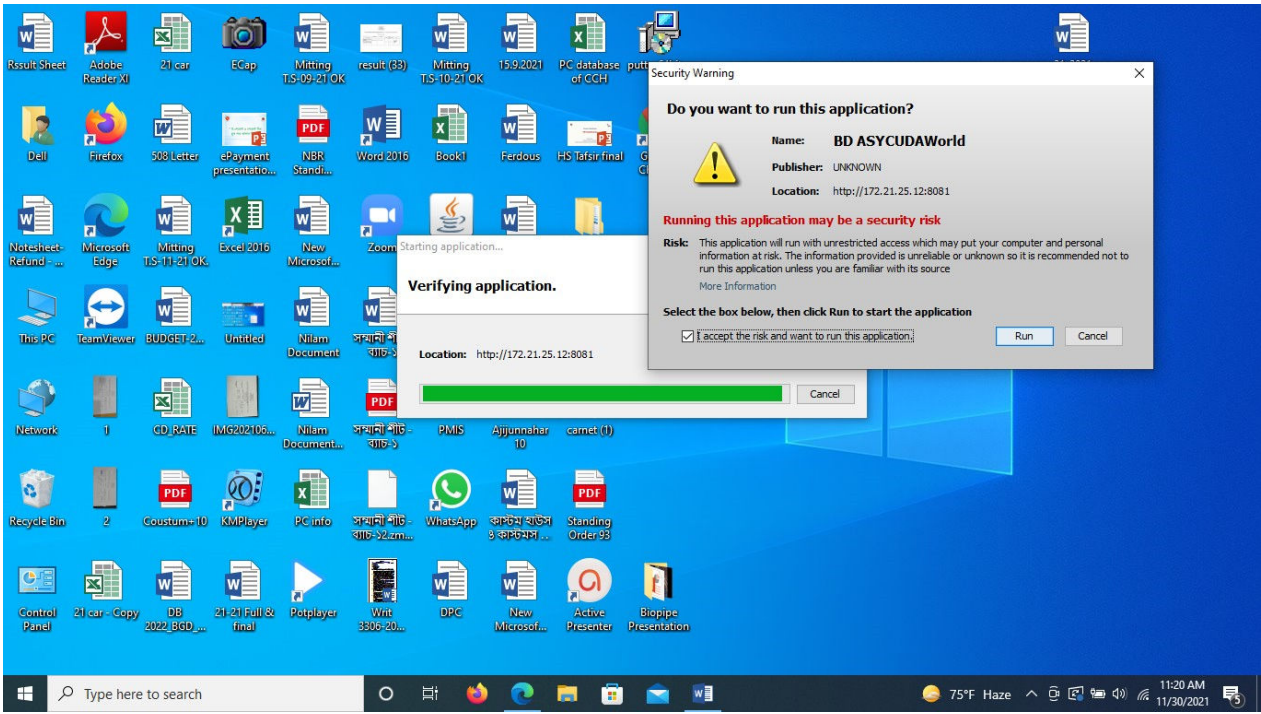
(Figure-6)



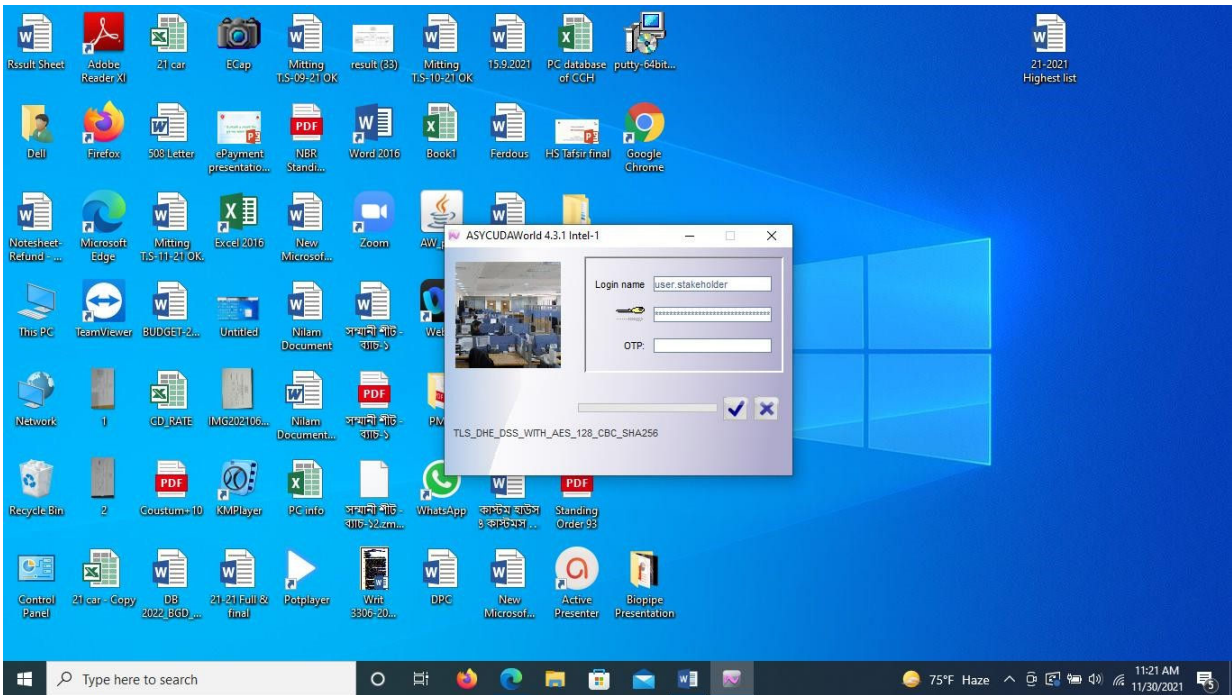
(Figure-7)



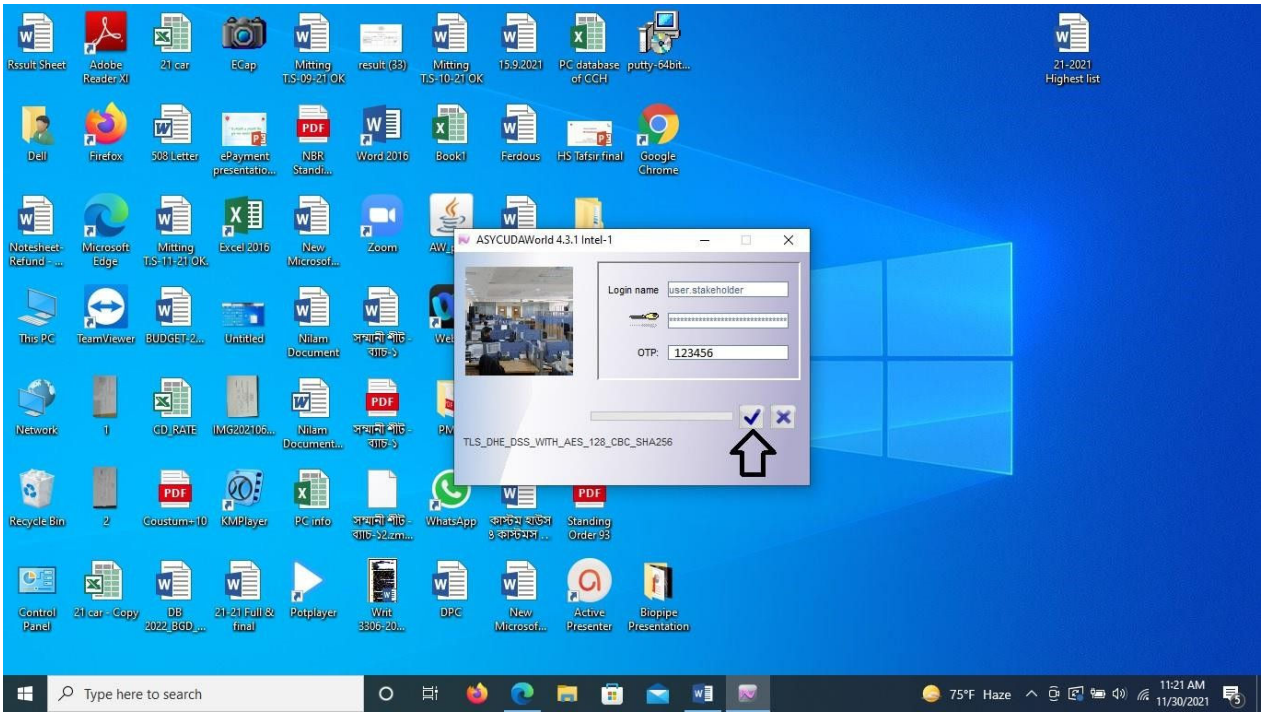
(Figure-8)



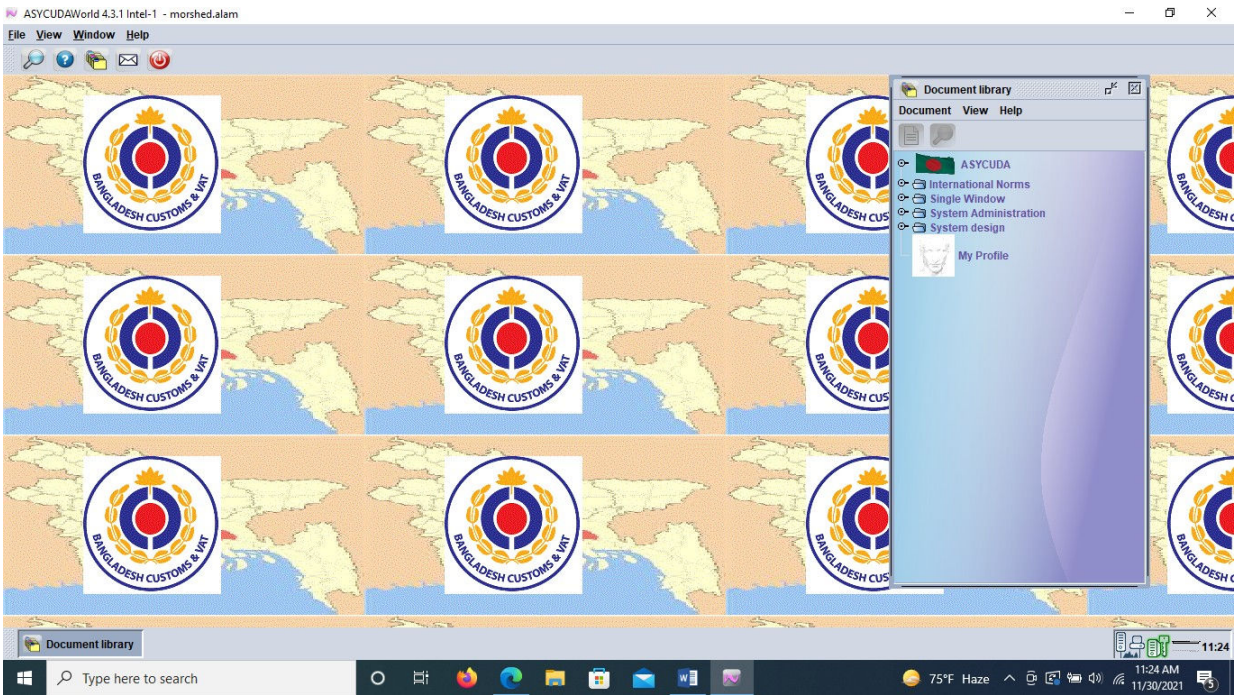
(Figure-9)



(Figure-10)



(Figure-11)



(Figure-12)